



# SUPERCHARGE

YOUR

# ROUTE PLANNING

Take every facet of your business to the next level with all-in-one route optimization and GPS tracking software.



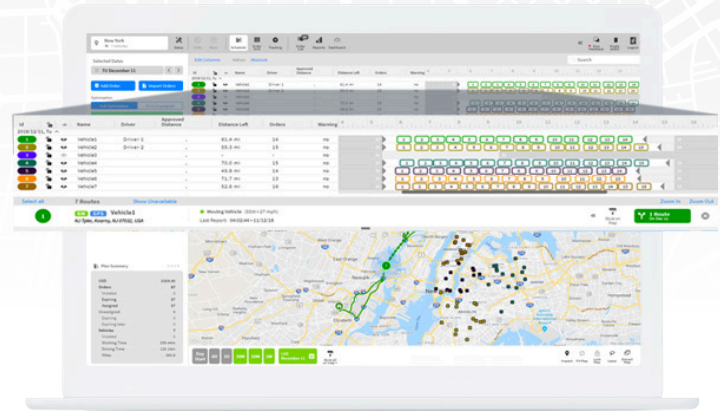
A Guide for Dispatchers, Drivers, and Owners -  
How Route Manager Boosts Every Role



Dispatcher • Planner

# STREAMLINE LOGISTICS PLANNING

Increase operational efficiency with Route Manager to ensure on-time orders and maximum productivity, allowing logistics planners to focus on the bigger picture.



## Automate Route Plans in Minutes

Route Manager's powerful algorithms allow planners to work smarter, not harder, so more time can be spent focusing on the details.



## Maximize Resources

Fit in more orders and reduce resources used while remaining compliant with any conditions users set in the software.



## Gain Visibility on Drivers and Vehicles

With GPS, live ETAs are updated every 60 seconds providing a breadcrumb trail of activity.



## Stay Ahead of Delays

Re-optimize your day on the spot and dynamically react to pop-up challenges that cause downstream issues.



## Remain in Complete Control

Customize routes, create your vehicle profiles and place conditions specific to business or regional needs.



## Improve Decision Making

Easily gauge your planned routes vs. what actually happened in the field in order to analyze performance. See the effect different routes have on cost and rule violations.

“Route Manager has kept us flexible in responding to quick expansion of our distribution needs. **It helps increase our responsiveness and efficiency** while the flexible API integration allows us to plan ahead and strategize within delivery zones in real-time.”

~ Logistics Manager, Beverage Delivery Industry



## EMPOWER DRIVERS

Rev-up deliveries with driver expertise combined with the smart route optimization capabilities of Route Manager.



### Reliable Hours

Efficiently planned routes mean life plans don't need to take a back seat. Drivers receive more reliable shift start and end times.



### Automatically Check In and Out of Stops

With Route Manager 360, there is no longer a need to manually check in and out of stops for dispatcher visibility.



### Aid Better Decision Making

Drivers have tribal knowledge of local roadways and know that deviations from planned routes may be necessary - actual vs. planned routes are reported back to planners to fuel future decision making.



### Ensure Accurate Time Cards

Recorded driver arrival and departure times allows businesses to record time accurately and issue correct payments; never cheating drivers out of money earned.



### Driver Rewards

Route Manager 360+ increases awareness of harsh driving events so they can be nipped in the bud, ensuring a safe performance.



### Improve Driver-Planner Communication

Drivers stay connected to dispatchers throughout the day via SMS or email alerts with route change notifications reflected in the driver mobile app.

### Easy-to-Use Mobile App for Drivers

- See ordered delivery schedule
- Turn-by-turn directions
- Update order statuses
- Capture proof of delivery
- Write notes and upload pictures

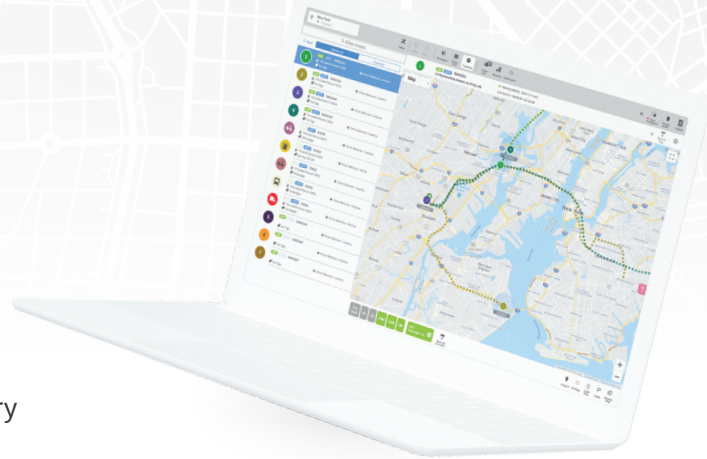


“The mobile app is a **super-powerful tool** that helps us. **Our drivers love it.**”

~ Co-Founder, Compost/Recycling Industry



Customer • Influencer



# IMPROVE CUSTOMER SATISFACTION

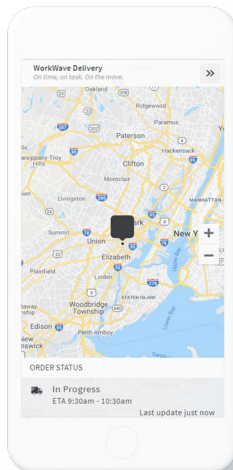
Deliver next-level customer service to your clients with WorkWave Route Manager. Shorten delivery windows with optimized routing and live ETAs, leading to on-time delivery and decreased customer service calls.

## Send Customer Notifications

Never keep another customer waiting. With automated email alerts, customers have complete visibility into their order status and live arrival times.

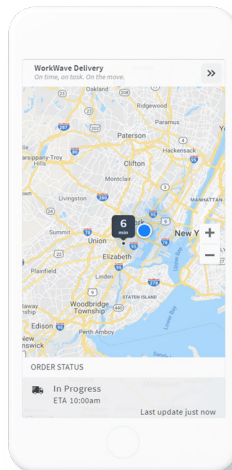
### SERVICE DAY

Hi Mike, your order with WorkWave delivery has been planned. The ETA is currently 9:30am-10:30am.  
<https://bit.ly/1jiaV1G>



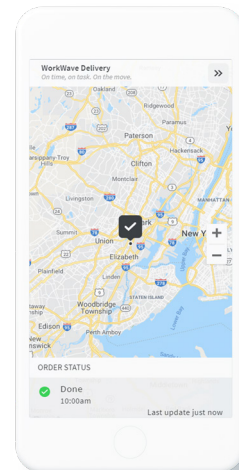
### ALMOST THERE

Hi Mike, your order with WorkWave delivery is almost there! We will be there in about 6 minutes.  
<https://bit.ly/1jiaV1G>



### STATUS UPDATE

Hi Mike, your order with WorkWave delivery has changed its status to Done. Please contact us at WorkWave delivery for any questions.  
<https://bit.ly/1jiaV1G>



By understanding customers' needs early on, we are able to offer a better service: **increase conversion rates, exceed customer expectations, and ensure on-time arrivals.** It's made possible with WorkWave Route Manager.

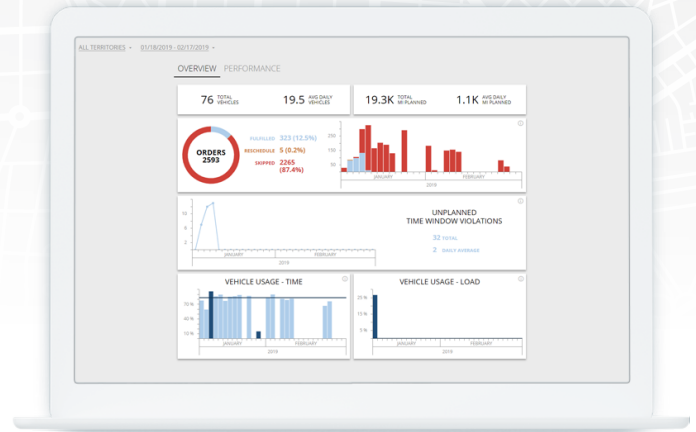
~ CEO-Founder, Home Delivery Industry



Owner • Operator

# GROW YOUR BUSINESS PROFITABLY

WorkWave Route Manager has helped businesses of all sizes across various last-mile industries operate more efficiently at scale.



## Increase OPERATIONAL EFFICIENCY

“It wasn’t an option for us to plan our routes manually – that just wouldn’t have worked! [WorkWave Route Manager] gives us a huge leg up against the competition – **and we couldn’t run our business without it!**”

~ Co-Founder, Compost/Recycling Industry

## Reduce INSURANCE & FUEL COSTS

“Our workers’ comp dropped 4% because we are using a GPS tracker. My car insurance came down almost 4%. When we are paying \$12,000 on our yearly insurance – that’s significant savings. We have even seen a decrease in idling costs and gas costs. **This makes it worth it all – it’s a blessing to have.**”

~ Owner, Residential Construction Industry, on the GPS capabilities available in Route Manager

## Increase Transparency INTO BUSINESS PERFORMANCE WITH REPORTING & ANALYTICS

“Especially as our business scales, we don’t have to get worried. **We look at WorkWave Route Manager for our business planning and forecasting.** Each month we’re checking what was planned vs. what actually happened and making assessments.”

~ Co-Founder, Compost/Recycling Industry

Plan **20%** More Deliveries

Increase Efficiency by **30%**

Reduce Fuel Costs by **10-15%**

READY TO LEARN MORE?

Contact Us Today! 866-497-4993 or email [WWRMsales@workwave.com](mailto:WWRMsales@workwave.com)