

## HIGHLIGHTS

### KEY BENEFITS

- Great avenue to move to a state of the art ERP system
- Enables training with customer data before GO-LIVE
- Minimal downtime
- Reasonably priced
- Customer receives Acumatica database with their data

### A SIMPLE 3 STEP PROCESS

1. Validate the Database(s)
2. Perform Preliminary Conversion
3. Go-Live

### ERP CONVERSIONS

- Microsoft Dynamics - SL
- Microsoft Dynamics - GP
- Sage 100 (Available Sept. 2014)
- Custom conversions available

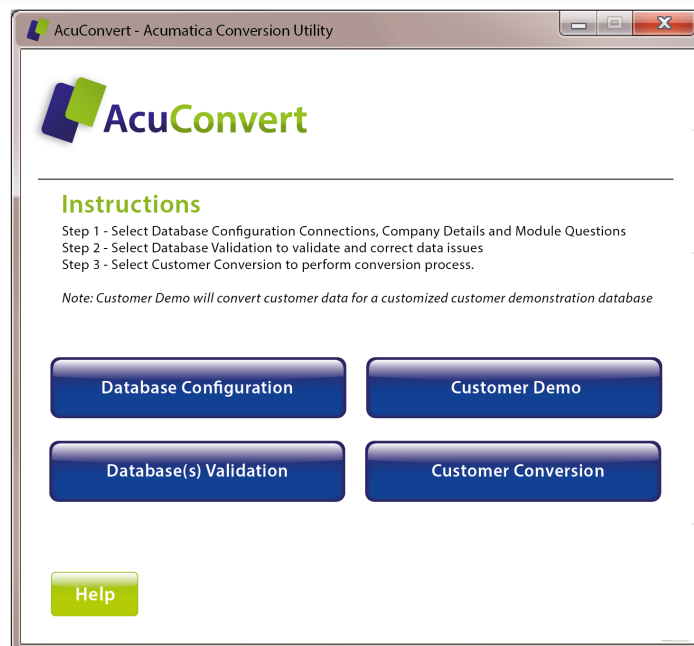
# AcuConvert

*AcuConvert is an Acumatica specific utility to convert an ERP database/files to the Acumatica framework.*

The tool is developed using integration services and web services to perform numerous tasks to complete a database conversion including system and module setups, masterfiles, and summary and detail transaction history. Database conversions are currently available for Microsoft Dynamics - SL and Dynamics - GP. Other ERP software conversions will follow. Custom conversions also available – contact ASI for details.

### KEY FEATURES

<b>System and module setup</b>	AcuConvert will convert system information including Companies, branches, Users, Sub-Account segments, masterfile segments and numbering sequence as well as module setups. The Acumatica system will be configured for use immediately following conversion.
<b>Masterfiles</b>	AcuConvert will convert masterfile information for each module being converted. The following is a sample: General Ledger; ledgers, chart of account, sub-accounts, financial years and financial periods; Accounts Payable; Vendor Classes and Vendors with locations; Accounts Receivable; Customer Classes, Statement Cycles, SalesPersons, Overdue Charges and Customers; etc.
<b>Summary and Detail Transactions</b>	AcuConvert will convert General Ledger details including GL Transactions and GL History; Accounts Payable details including Vendor Invoices open and closed, Vendor disbursements with drill down as functions in Acumatica. Accounts Receivable details including Customer invoices open and closed, Customer payment with drill down as functions in Acumatica. Cash Manager details, Taxes etc.



**CONVERSION PROCESS**

AcuConvert provides a well defined process to ensure an accurate and successful data conversion. The AcuConvert program runs on a workstation or server which has access to the ERP SQL database(s) or file structure. No client software installation is required.

**A SIMPLE THREE STEP PROCESS**

**1. Validate the Database(s):**

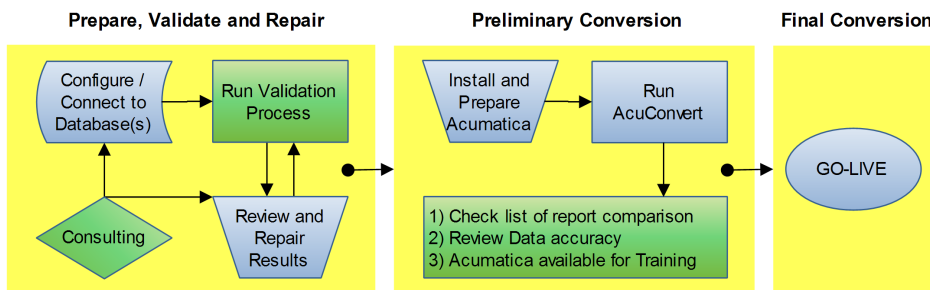
Use automated tools within AcuConvert to check and verify data consistency. The program will examine the database then provide a list of repairable issues with an explanation of inconsistencies. The data will need to be repaired before moving forward with the conversion. ASI is available to provide consulting services to assist with repairing errors found during the validation process.

**2. Perform Preliminary Conversion:**

Once the Database has been validated and prepared; a preliminary conversion is processed to provide a review of the customer data before going live. Documentation is provided to assist in the review process. This is a great opportunity to provide training with customer data in preparation to GO-LIVE.

**3. GO-LIVE:**

After verifying the success of the preliminary conversion, scheduling the final conversion will be the last step to achieving a successful customer's Acumatica environment.



**DATABASE CONFIGURATION**

AcuConvert has an available configuration spreadsheet which defines the Acumatica company, branch and location definition along with other configuration settings.

Accounting System Integrators  
www.acuconvert.com  
sales@acuconvert.com  
T 203.239.7740

**AcuConvert**

**SUPPORTS MANY IMPORT SCENARIOS**

1. Single database with single company to the same in Acumatica.
2. Single database with multi-company to a single company with multiple branches in Acumatica.
3. Single database with multi-company to same in Acumatica.
4. Multiple databases with single companies to single company with multi-branch in Acumatica.
5. Multi database with multi-company to single company with multi-branch in Acumatica.
6. Multi database with multi-company to multi company with multi-branch in Acumatica.